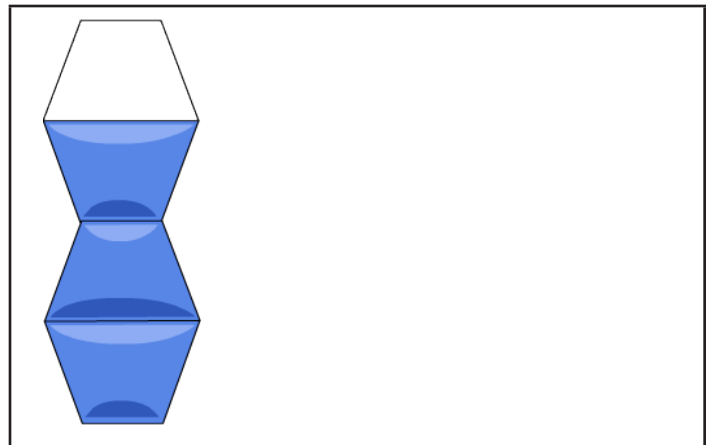
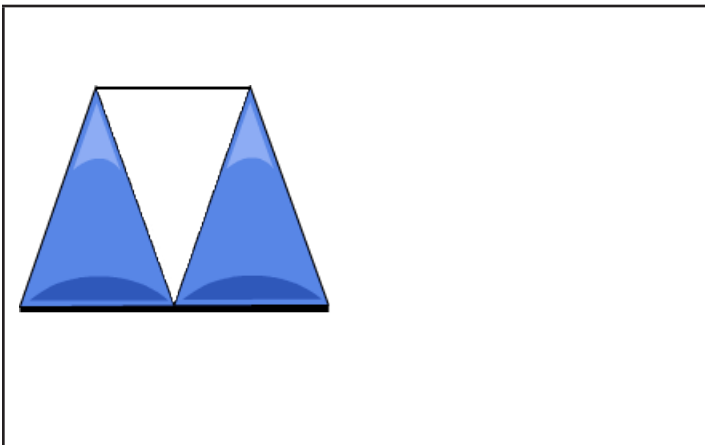
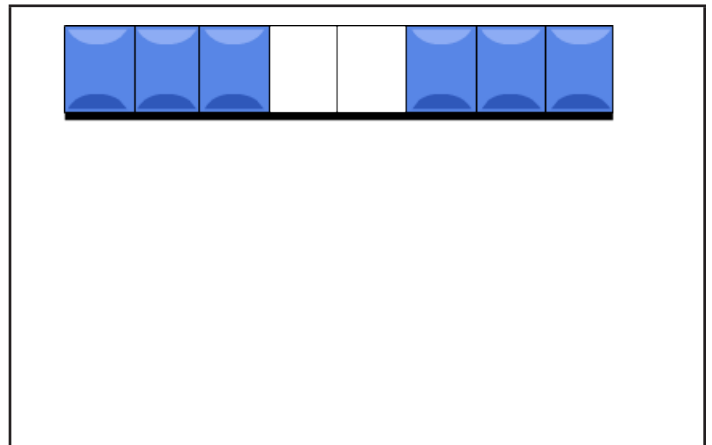
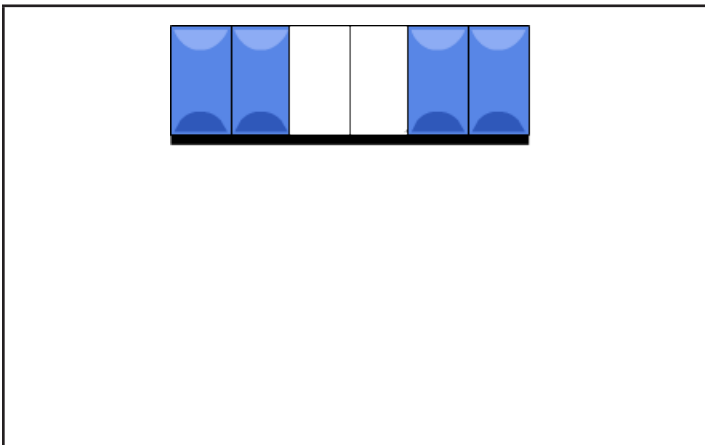
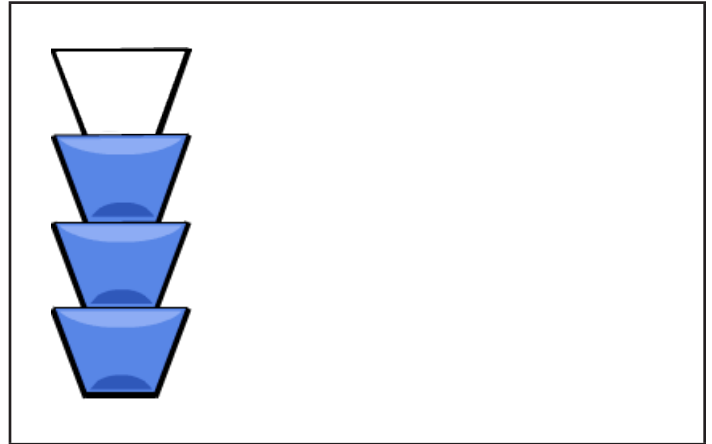
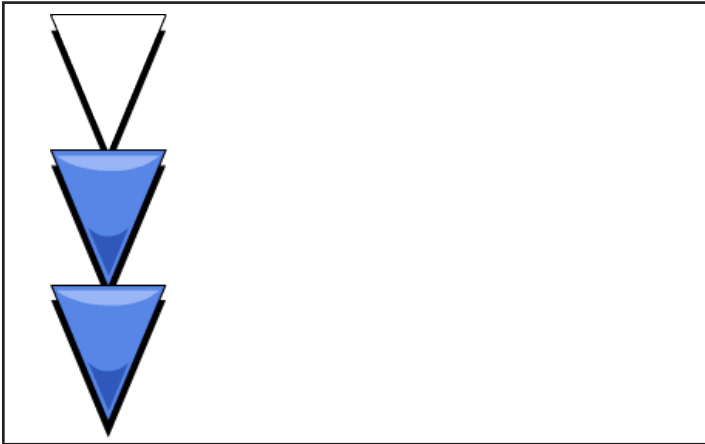
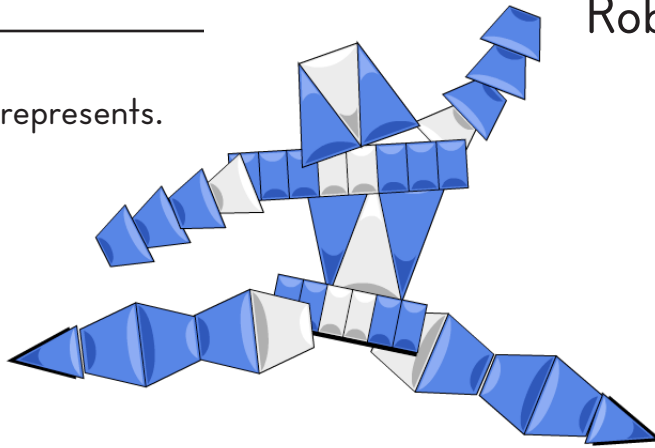


Name: \_\_\_\_\_

# Robot Fractions

Write the fraction that each shape represents.  
Is it  $\frac{2}{3}$  or  $\frac{3}{4}$ ?



# Teacher Notes:

## Robot Fractions 2 (Grade 3)

### ONLINE ACTIVITY

[Robot Shapes](#)

### LEAD-IN ACTIVITY SUGGESTIONS

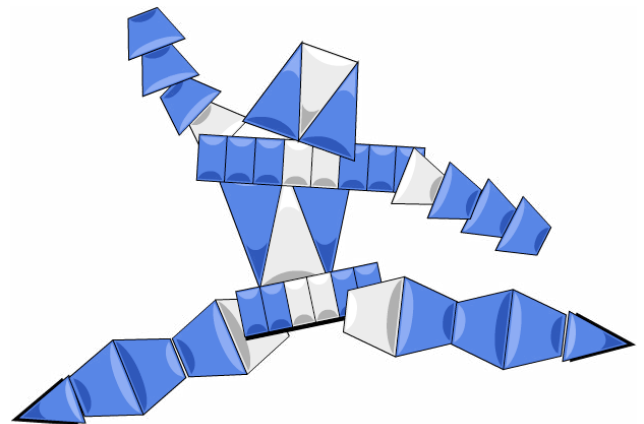
1. If needed, review fractions and equal parts with the Starfall online activities *Make a Match: Equal Shares* and *Let's Make a Pizza*.
2. Provide students with a set of items in a variety of colors (blocks, candies, markers, etc.). Ask students to work out the fraction each color represents of the total. Are there equal or unequal parts? This can also be done with a variety of sizes or shapes, a variety of types of coins, etc. Turn focus to the online activity or worksheet.

### EXTENSION ACTIVITY SUGGESTIONS

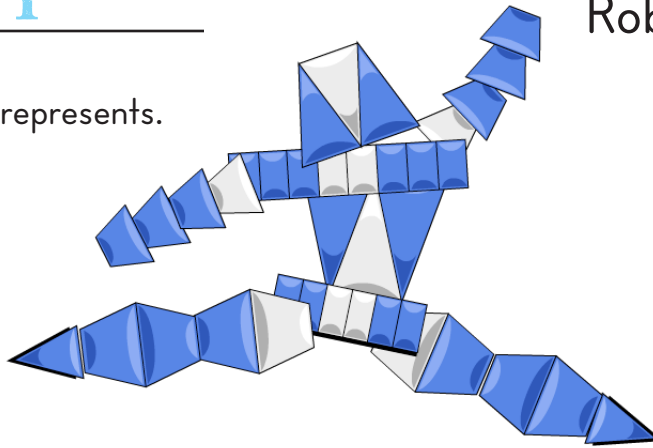
1. Using individual whiteboard or papers inside page protectors, have students draw their own representations of the target fractions. How many ways can they show  $\frac{2}{3}$  and  $\frac{3}{4}$  with a square/circle/triangle, etc.? Practice vocabulary for the shapes and simplifying fractions as necessary. This can also be demonstrated with manipulatives of different colors.

### ADDITIONAL NOTES

1. **ESL and Special Education:** Review the names of the shapes used in the online activity and worksheet.



Write the fraction that each shape represents.  
Is it  $\frac{2}{3}$  or  $\frac{3}{4}$ ?



$$\frac{2}{3}$$

$$\frac{3}{4}$$

$$\frac{2}{3}$$

$$\frac{3}{4}$$

$$\frac{2}{3}$$

$$\frac{3}{4}$$